



**Cavity  
Sliders™**

The Premium  
Pocket Door Solution

distributed by



# CS Cavity Slider™ Features



**Smooth running carriages**  
with encased ball bearings.  
Up to 500lb (240kg) capacity

**SofStop Soft Close/Soft Open**  
also available



**Corner joining brackets** ensure precise right angled assembly



**T-joining brackets** for easy assembly of slats to split jambs & back stud



**Horizontal slats** for added strength

**Split Jambs and slats** use hollow core technology for superior rigidity

**Door Thickness**

1-3/8" to 1-3/4"  
2x4 Stud

1-3/8" to 2-1/4"  
2x6 Stud

**Strong aluminum frame** complies with Type 1 Construction



**2x4**



**2x6**

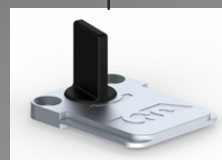
**Extruded aluminum track** incorporated into head unit



**Trim Clips** for quick & easy trim fitting

Compatible with 4" and 6" stud sizes

**Bottom plate assembly**



**Adjustable T-Guide**

Patent Pending



**Cycle tested 1 million openings**



**ADA Compliant**



**Available with SofStop®**



**Single or Bi-Parting units**



**Maximum door weight**

Instructions/  
Instrucciones



# Pocket Frame Systems

## CS Cavity Slider

The CS Cavity Slider™ is a practical solution for those areas where there is not enough space for a swinging door. In addition to its space saving attributes in restrooms, hallways and laundries, it can be used with confidence for architectural feature openings around your project.

### Design Features & Options

- Structurally robust due to its construction from aluminum extrusions
- Pocket frame accommodates 1-3/8" and 1-3/4" doors up to 4'0" x 8'0"
- Suitable for residential and commercial projects
- Compatible with SofStop (soft open and soft close hardware)
- Complies with Type 1 Construction without any combustible materials

CS Cavity Slider (2x4 Stud)			
Model	Max. Door Size	Model	Max. Door Size
CSPDF2480	2/0 x 6/8	CSPDF2496	2/0 x 8/0
CSPDF2880	2/4 x 6/8	CSPDF2896	2/4 x 8/0
CSPDF3080	2/6 x 6/8	CSPDF3096	2/6 x 8/0
CSPDF3280	2/8 x 6/8	CSPDF3296	2/8 x 8/0
CSPDF3480	2/10 x 6/8	CSPDF3496	2/10 x 8/0
CSPDF3680	3/0 x 6/8	CSPDF3696	3/0 x 8/0
		CSPDF4296	3/6 x 8/0
		CSPDF4896	4/0 x 8/0



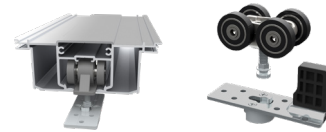
## CS Ultimate Cavity Slider

The CS Ultimate® Cavity Slider pocket door frame is the largest and most robust pocket frame on the market. The CS Ultimate is made for a 5-1/2" (144 mm) stud size and structurally robust due to its construction from aluminum extrusions.

### Design Features & Options

- Accommodates 1-3/8" to 2-1/4" thick doors (35 to 57 mm)
- Up to 5'0" x 10'0" door size (1,524 x 3,048mm)
- Suitable for residential and commercial projects
- Compatible with SofStop (soft open and soft close hardware)
- Complies with Type 1 Construction without any combustible materials

CS Ultimate Cavity Slider (2x6 Stud)			
Model	Max. Door Size	Model	Max. Door Size
CSUPDF3096	2/6 x 8/0	CSUPDF36108	3/0 x 9/0
CSUPDF3296	2/8 x 8/0	CSUPDF48108	4/0 x 9/0
CSUPDF3696	3/0 x 8/0	CSUPDF36120	3/0 x 10/0
CSUPDF4896	4/0 x 8/0	CSUPDF48120	4/0 x 10/0
		CSUPDF60120	5/0 x 10/0



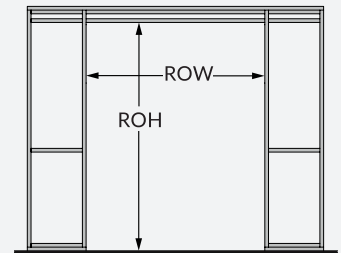
### How to Order

- Choose a Size**  
Frames can be cut down on site to maximize size for each model.
- Choose a Carriage Pack** (one per door)  
Includes: Carriages, mounting plates, T-Guide, fixing screws and adjusting wrench and one [1] track.

### Rough Opening

DH = Door Height DW = Door Width

Dimension	Inches
RO Height	DH + 4-1/4"
RO Width   Single	(DW x 2) + 2"
RO Width   Bi-Parting	(DW x 4) + 2"



## Carriage Packs

Required on all frames and tracks.

Standard			SofStop®					SofStop® HD				
Model	Stops	Max. Door Weight	Model	Type	Stops	Min. Door Width	Max. Door Weight	Model	Type	Stops	Min. Door Width	Max. Door Weight
CSCPM6NS	No Stop	200 lbs	CSSSANS176	Single Action	No Stop	23"	0-200 lbs	CSSSANS264	Single Action	No Stop	26"	200-350 lbs
CSCPM8NS	No Stop	500 lbs	CSSSA1S176	Single Action	1 Stop	26"	0-200 lbs	CSSSA1S264	Single Action	1 Stop	29"	200-350 lbs
CSCPM61S	1 Stop	200 lbs	CSSSA2S176	Single Action	2 Stops	28"	0-200 lbs	CSSSA2S264	Single Action	2 Stops	31"	200-350 lbs
CSCPM81S	1 Stop	500 lbs	CSSSDANS176	Double Action	No Stop	23"	0-200 lbs					
CSCPM62S	2 Stops	200 lbs	CSSSDA1S176	Double Action	1 Stop	26"	0-200 lbs					
CSCPM82S	2 Stops	500 lbs	CSSSDA2S176	Double Action	2 Stops	28"	0-200 lbs					

Check with your OrePac representative for local availability.

# Track Systems

## CS TopMountTrack - Single

CS TopMountTrack - Single is a smooth running low profile track system. Its versatility makes it popular for a range of opening types including pocket, barn, partition and multi-sliding applications.

### Design Features & Options

- Track is high quality, heavy duty extruded aluminum
- Smooth running track for wide range of versatile applications
- Track is notched for simple carriage insertion

CS CaviTrack - Single	
Model	Track Length
CST6	6'
CST8	8'
CST12	12'



## CS TopMountTrack - Double

CS TopMountTrack - Double is a smooth running low profile sliding door track system suitable for incorporating into pocket door frame and bypass wardrobe assemblies.

### Design Features & Options

- Tracks can be used for bypass and collection systems
- Tracks can be configured to suit Bi-Parting door set-ups
- Custom lengths can be cut in the field

CS TopMountTrack - Double	
Model	Track Size
CSTMDT1386	1-3/8" 6'
CSTMDT1388	1-3/8" 8'
CSTMDT1346	1-3/4" 6'
CSTMDT1348	1-3/4" 8'



## CS FH-CeilingMountTrack

One of the most effective ways to make your space feel more open and taller is by using full-height doors. The base of this track sits flush with the ceiling, allowing the sliding doors to span from floor to ceiling.

### Design Features & Options

- Easily achieve floor-to-ceiling sliding doors
- Track is high-quality, heavy duty extruded aluminum
- Track is notched for simple carriage insertion

CS FH-CeilingMountTrack	
Model	Track Length
CSCMT6S	6' single
CSCMT8S	8' single
CSCMT12S	12' single



## CS CaviTrack Side Mount

CS CaviTrack Side Mount is an ideal surface sliding solution where vertical fixing space is limited. This system is side fixed through the track profile. It is popular when the top of the door opening is close to the ceiling and there isn't structural support for fixture above the track.

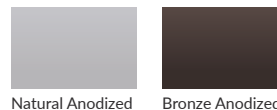
### Design Features & Options

- Modern, space efficient barn door track
- Track is high quality, heavy duty extruded aluminum
- Track is notched for simple carriage insertion

CS CaviTrack Side Mount	
Model	Description
CSTCSM6N	6' CaviTrack Side Mount Combo Kit Natural
CSTCSM8N	8' CaviTrack Side Mount Combo Kit Natural
CSTCSM6B	6' CaviTrack Side Mount Combo Kit Bronze
CSTCSM8B	8' CaviTrack Side Mount Combo Kit Bronze



### Finish Options



### How to Order

#### 1. Choose a Length:

Available in 6', 8', and 12' pre-cut lengths or can be cut down to specified length on request.

#### 2. Choose a Carriage Pack (one per door)

Includes: Carriages, mounting plates, T-Guide, fixing screws and adjusting wrench and one [1] track.

Check with your OrePac representative for local availability.

# Barn Door Track Systems

## CS BarnDoorTrack

Traditional barn door track suitable for surface sliding applications where there is enough strength in the wall to mount and support a side-track with door above the opening.

### Design Features & Options

- Available with SofStop® 264lb soft close / soft open kit (suitable for retrofit). Minimum recommended door width 32"
- Track can be easily adjusted to allow for different wall clearances with baseboard and moulding
- Pre-machined mounting holes. Additional holes can be drilled on site to match studs

CS BarnDoorTrack		
Model	Length	Thickness
CSBTPN6	6'	Narrow
CSBTPN7	7'	Narrow
CSBTPN8	8'	Narrow
CSBTPW6	6'	Wide
CSBTPW7	7'	Wide
CSBTPW8	8'	Wide



### How to Order

#### 1. Choose a Track:

Available in narrow and wide profiles to accommodate thick doors or deep baseboards.

#### 2. Add Hardware:

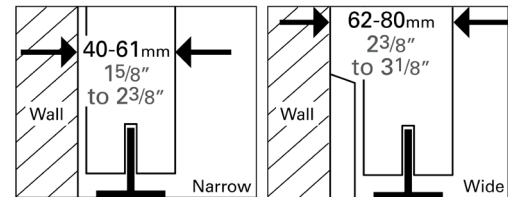
##### Hanger Pack

CSBDHP CS Barn Door Hangers & Stops Pack

##### SofStop® Single Soft Close (optional)

CSBDSSS SofStop (264lb) Single Pack for Barn Door Track  
Two (2) required for soft open and soft close

1-5/8" to 2-3/8" (40-61mm) (Narrow option) or  
2-3/8" to 3-1/8" (62-80mm) (Wide option).



## CaviLock Sliding Door Hardware

See reverse side for a complete list of product codes.

### Standard CL200 Range

The CL200 is a durable range of sliding door hardware suitable for residential, commercial, and hospitality applications. Privacy handles incorporate a patented latching system\*, ensuring a smooth locking action.

### Design Features & Options

- Two face plate widths available
- Handles can be adjusted to suit doors from 1-3/8" to 1-1/2" or 1-5/8" to 1-3/4" thick

\*patent pending

### Finish Options



Satin Chrome Bright Chrome Satin Nickel



Oil Rubbed Bronze Matte Black



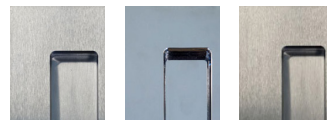
### Premium CL400 Magnetic

The award winning CL400® Magnetic pocket door handle features a patented magnetic catch and plunger system. This innovation provides a positive 'hold close' for passage handles and a beautifully smooth action on locking hardware. Five standard finish options are available.

### Design Features & Options

- Configurations include Passage, Privacy, Bi-Parting and Key Locking
- Door slides flush back into the pocket
- Suits doors from 1-3/8" to 1-3/4" thick

### Finish Options



Satin Chrome Bright Chrome Satin Nickel



Oil Rubbed Bronze Matte Black



Check with your OrePac representative for local availability.

# CaviLock Sliding Door Hardware (cont.)

Product Code	Description
CS2PA13410B	1-3/4" 200 Series Passage Lock Oil Rubbed Bronze
CS2PA13415	1-3/4" 200 Series Passage Lock Satin Nickel
CS2PA1341D	1-3/4" 200 Series Passage Lock Matte Black
CS2PA13426	1-3/4" 200 Series Passage Lock Bright Chrome
CS2PA13426D	1-3/4" 200 Series Passage Lock Satin Chrome
CS2PA13810B	1-3/8" 200 Series Passage Lock Oil Rubbed Bronze
CS2PA13815	1-3/8" 200 Series Passage Lock Satin Nickel
CS2PA1381D	1-3/8" 200 Series Passage Lock Matte Black
CS2PA13826	1-3/8" 200 Series Passage Lock Bright Chrome
CS2PA13826D	1-3/8" 200 Series Passage Lock Satin Chrome
CS2PR13410B	1-3/4" 200 Series Magnetic Privacy Lock Non-Handed Oil Rubbed Bronze
CS2PR13415	1-3/4" 200 Series Magnetic Privacy Lock Non-Handed Satin Nickel
CS2PR1341D	1-3/4" 200 Series Magnetic Privacy Lock Non-Handed Matte Black
CS2PR13426	1-3/4" 200 Series Magnetic Privacy Lock Non-Handed Bright Chrome
CS2PR13426D	1-3/4" 200 Series Magnetic Privacy Lock Non-Handed Satin Chrome
CS2PR13810B	1-3/8" 200 Series Magnetic Privacy Lock Non-Handed Oil Rubbed Bronze
CS2PR13815	1-3/8" 200 Series Magnetic Privacy Lock Non-Handed Satin Nickel
CS2PR1381D	1-3/8" 200 Series Magnetic Privacy Lock Non-Handed Matte Black
CS2PR13826	1-3/8" 200 Series Magnetic Privacy Lock Non-Handed Bright Chrome
CS2PR13826D	1-3/8" 200 Series Magnetic Privacy Lock Non-Handed Satin Chrome
CS4PA13410B	1-3/4" 400 Series Magnetic Passage Lock Oil Rubbed Bronze
CS4PA13415	1-3/4" 400 Series Magnetic Passage Lock Satin Nickel
CS4PA1341D	1-3/4" 400 Series Magnetic Passage Lock Matte Black
CS4PA13426	1-3/4" 400 Series Magnetic Passage Lock Bright Chrome
CS4PA13426D	1-3/4" 400 Series Magnetic Passage Lock Satin Chrome

Product Code	Description
CS4PA13810B	1-3/8" 400 Series Magnetic Passage Lock Oil Rubbed Bronze
CS4PA13815	1-3/8" 400 Series Magnetic Passage Lock Satin Nickel
CS4PA1381D	1-3/8" 400 Series Magnetic Passage Lock Matte Black
CS4PA13826	1-3/8" 400 Series Magnetic Passage Lock Bright Chrome
CS4PA13826D	1-3/8" 400 Series Magnetic Passage Lock Satin Chrome
CS4PRL13410B	1-3/4" 400 Series Magnetic Privacy Lock LH Oil Rubbed Bronze
CS4PRL13415	1-3/4" 400 Series Magnetic Privacy Lock LH Satin Nickel
CS4PRL1341D	1-3/4" 400 Series Magnetic Privacy Lock LH Matte Black
CS4PRL13426	1-3/4" 400 Series Magnetic Privacy Lock LH Bright Chrome
CS4PRL13426D	1-3/4" 400 Series Magnetic Privacy Lock LH Satin Chrome
CS4PRL13810B	1-3/8" 400 Series Magnetic Privacy Lock LH Oil Rubbed Bronze
CS4PRL13815	1-3/8" 400 Series Magnetic Privacy Lock LH Satin Nickel
CS4PRL1381D	1-3/8" 400 Series Magnetic Privacy Lock LH Matte Black
CS4PRL13826	1-3/8" 400 Series Magnetic Privacy Lock LH Bright Chrome
CS4PRL13826D	1-3/8" 400 Series Magnetic Privacy Lock LH Satin Chrome
CS4PRR13410B	1-3/4" 400 Series Magnetic Privacy Lock RH Oil Rubbed Bronze
CS4PRR13415	1-3/4" 400 Series Magnetic Privacy Lock RH Satin Nickel
CS4PRR1341D	1-3/4" 400 Series Magnetic Privacy Lock RH Matte Black
CS4PRR13426	1-3/4" 400 Series Magnetic Privacy Lock RH Bright Chrome
CS4PRR13426D	1-3/4" 400 Series Magnetic Privacy Lock RH Satin Chrome
CS4PRR13810B	1-3/8" 400 Series Magnetic Privacy Lock RH Oil Rubbed Bronze
CS4PRR13815	1-3/8" 400 Series Magnetic Privacy Lock RH Satin Nickel
CS4PRR1381D	1-3/8" 400 Series Magnetic Privacy Lock RH Matte Black
CS4PRR13826	1-3/8" 400 Series Magnetic Privacy Lock RH Bright Chrome
CS4PRR13826D	1-3/8" 400 Series Magnetic Privacy Lock RH Satin Chrome

Check with your OrePac representative for local availability.



CS Cavity Slider



CS Ultimate Cavity Slider



CS CaviTrack