

Tyvek® Protec™ Roofing Underlayments



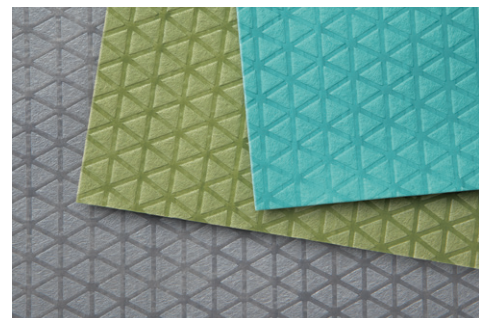
INDUSTRY-LEADING WALKABILITY

The unique embossed pattern allows for better traction and grip while walking on the roof.



TRUSTED QUALITY AND DURABILITY

Another innovative material breakthrough from DuPont™ Tyvek®, the leader in building envelope systems.



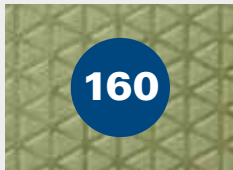
A FAMILY OF UNDERLAYMENTS

Our portfolio of roofing underlayments provides choices to better meet your needs.

Industry-leading walkability in dry, wet, hot, cold and dirty conditions.

A portfolio of engineered synthetic roofing underlayments with industry-leading walkability from DuPont, the trusted name in total building envelope solutions. Ideal for slopes 2:12 or higher under a variety of roofing materials in repair, re-roofing and new construction.

Tyvek® Protec™



	120	160	200
Walkability	Best in Class	Best in Class	Best in Class
Roll Size (10 square)	48" x 250'	48" x 250'	48" x 250'
Rolls Per Pallet	49	36	36
Roll Weight	25 lbs	31 lbs	36 lbs
Warranty	30 years	40 years	50 years
UV Exposure	3 months	6 months	6 months
Roof Types			
Asphalt Shingle	✓	✓	✓
Cedar Shingle	✓	✓	✓
Metal	✓	✓	✓
Tile		✓	✓
Slate		✓	✓
Recyclable	✓	✓	✓
ASTM D226 Types I & II	✓	✓	✓
ICC-ES AC188	✓	✓	✓
Class A Per ASTM E108	✓	✓	✓



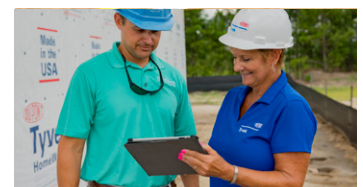
Easy to Chalk
Accepts and holds chalk marks for more visible lines and a better finished product.



Wrinkle-free
Lays flat and stays flat for a more uniform shingled surface.



Protects the roof
Preserves the roof deck during installation and provides an effective secondary moisture barrier.



Supported by the DuPont™ Tyvek® Specialist Network
Specialists are available across the U.S. and Canada for additional knowledge and support.



tyvek.com/protec 1-800-44-TYVEK

Industry-leading walkability when compared to other low permeability synthetic roofing underlayments.
Copyright © 2016 DuPont. All rights reserved. The DuPont Oval Logo, DuPont™, For Greater Good™, Tyvek® and Tyvek® Protec™ are trademarks or registered trademarks of E.I. du Pont de Nemours and Company or its affiliates. K-29377 (06/16)

